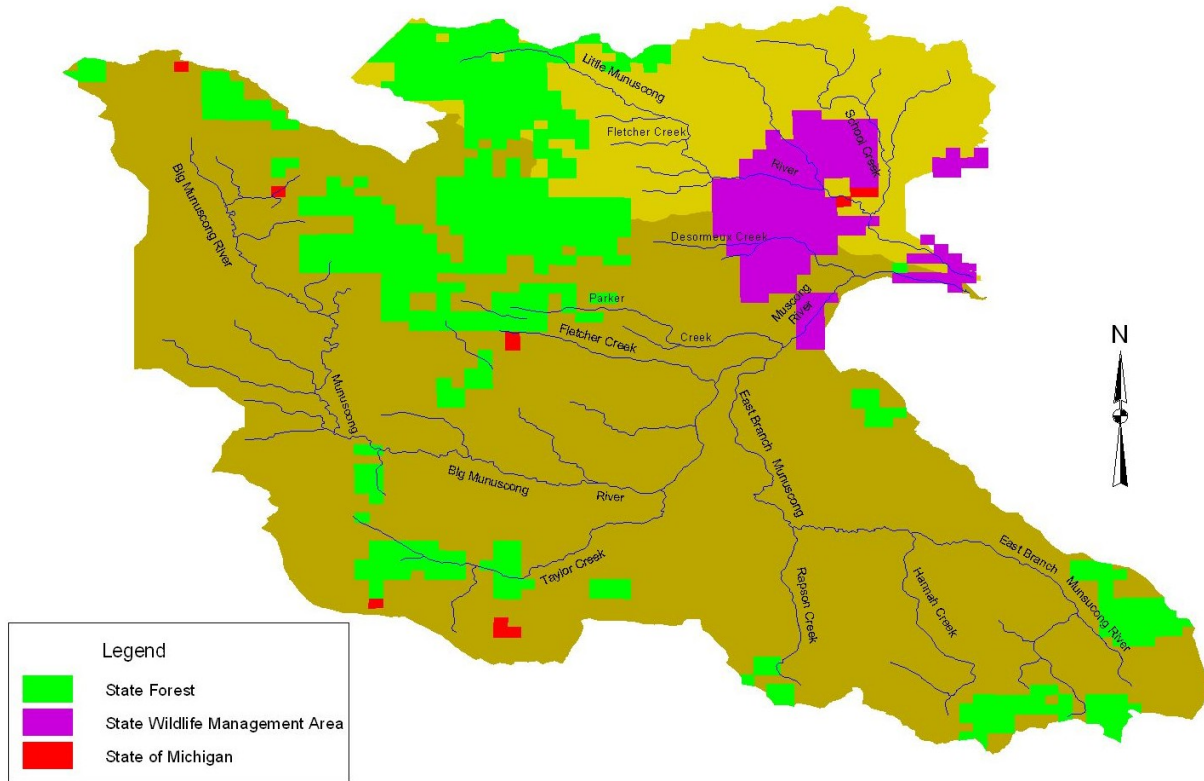


State and Federal Lands



| | | Lake Superior | Munuscong | Other | Total |
|-------------------------------|--------------|---------------|--------------------|------------|---------------|
| | Watershed ID | State Forest | Wildlife Mgmt Area | State Land | Acres |
| Munuscong River | | | | | |
| Headwaters | 52 1 | 3,486 | 0 | 79 | 3,566 |
| Upper | 52 2 | 322 | 0 | 0 | 322 |
| Taylor Creek | 52 3 | 1,944 | 0 | 159 | 2,104 |
| Middle - Above Fletcher Creek | 52 4 | 1,094 | 0 | 40 | 1,134 |
| East Branch at Hannah Creek | 52 5 | 3,140 | 0 | 40 | 3,179 |
| East Branch at mouth | 52 6 | 849 | 0 | 0 | 849 |
| Munuscong at mouth | 52 7 | 6,105 | 2,872 | 39 | 9,016 |
| Munuscong Sub-total | | 16,939 | 2,872 | 358 | 20,169 |
| Little Munuscong River | | | | | |
| Above School Creek | 62L 18 | 6,470 | 2,571 | 81 | 9,122 |
| At mouth | 62L 19 | 40 | 2,486 | 41 | 2,566 |
| Little Munuscong Sub-total | | 6,509 | 5,057 | 122 | 11,688 |
| Total Watershed | | 23,449 | 7,928 | 479 | 31,857 |